

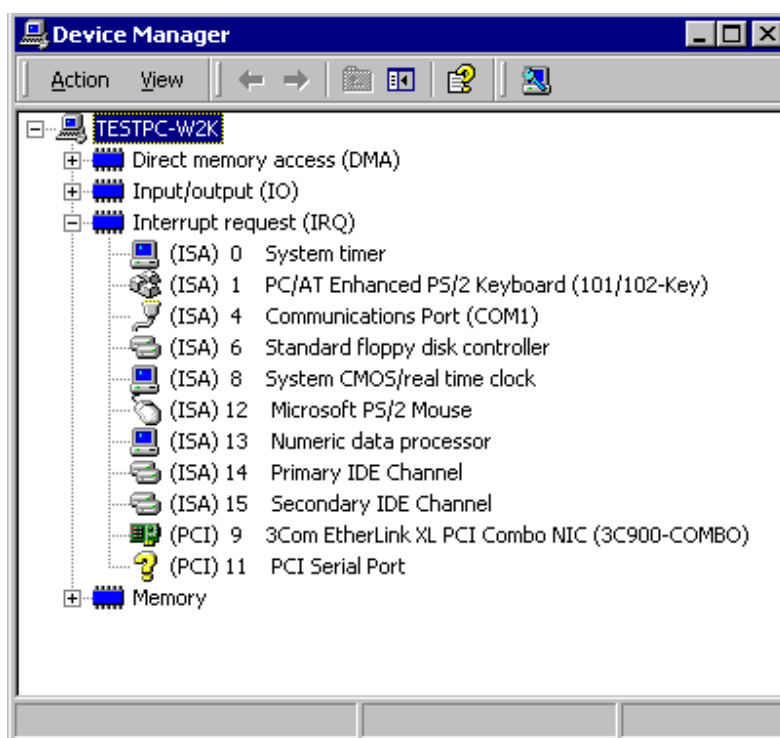
## Installation guide for PD 3920 PC P-NET Card, when working with VIGO under Windows 2000

1)

To establish which interrupts are already being used by the computer, open the "Start\Settings\Control

Panel\System and select the Hardware tab. Select the "Device Manager" button.

In the View menu select resources by type. Clicking the plus at "Interrupt Request (IRQ)" displays a list of used Interrupts. To find which I/O addresses are not already used in the computer, click the plus at "Input/Output (IO)".



Installation of a PD 3920 card requires that one interrupt within the range from 3 to 7 is free. If no interrupt is free, it will be necessary to move or remove one of the other interrupts.

If Interrupt 3 (Jumper 10) is already being used, by perhaps another network card or a COM2 serial device, it is recommended that Interrupt 5 (Jumper 12) is used instead.

If Interrupt 5 is also being used by an already installed plug and play device, such as a sound card, it is recommended that such a device is reconfigured to allow Interrupt 5 to be available for the P-NET card.

2)

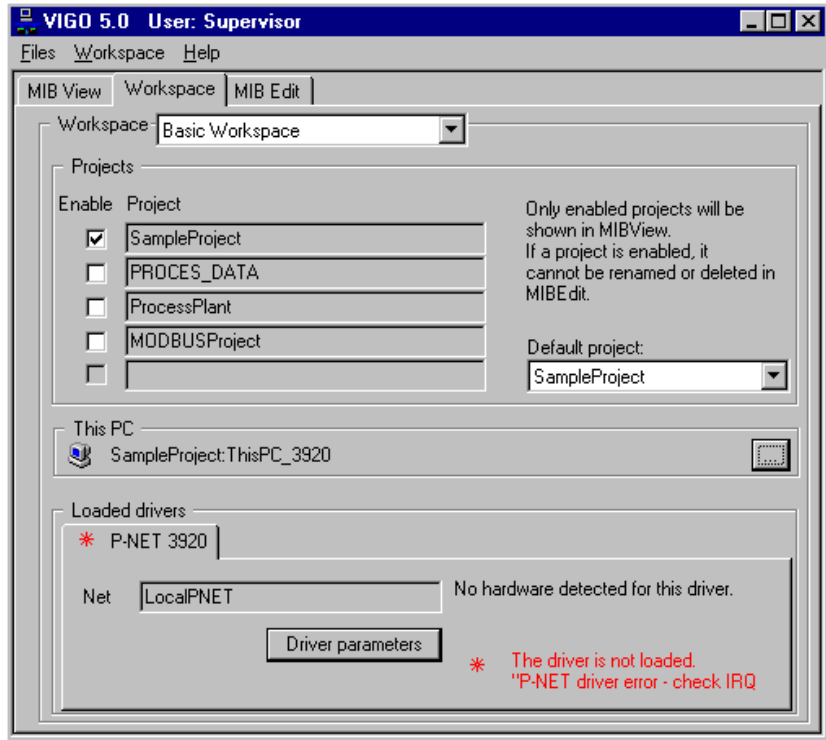
Turn off the PC and plug in the PD 3920 PC P-NET card in the ISA slot in the PC.

3)

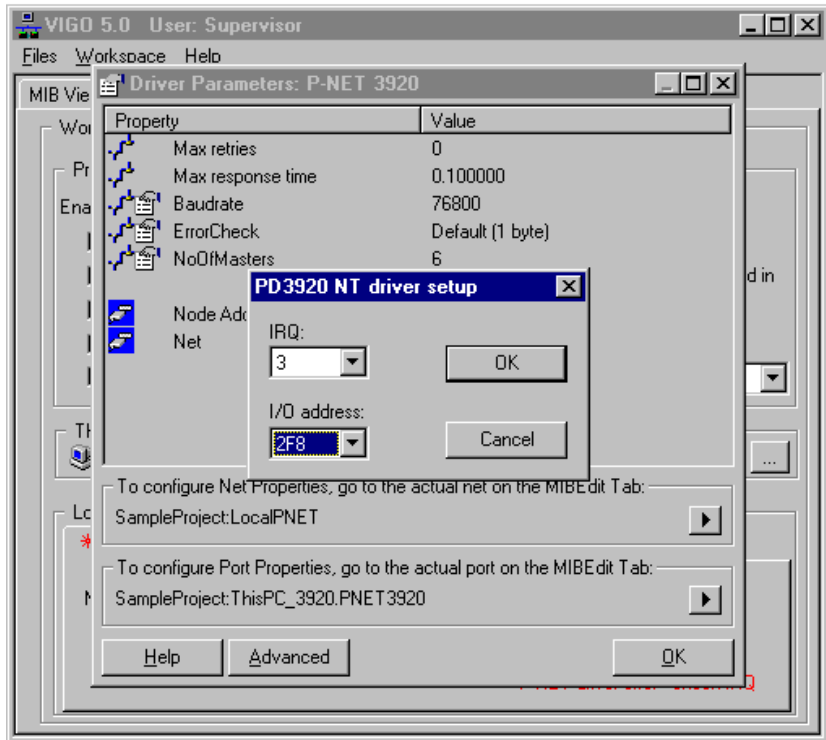
Turn on the PC followed by installing VIGO.

4)  
 Start VIGO and select Basic Workspace at the Workspace tab. For ThisPC select: ThisPC\_3920 in SampleProject.

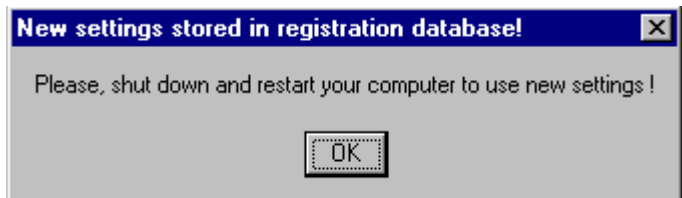
Please note that the PD 3920 driver is not loaded. The driver tab is therefore marked with a red star. This indicates that IRQ and I/O address is not yet configured correctly.



5)  
 In VIGO, the interrupt number and I/O address are set up in the Driver parameters\Advanced window. Please note, that to change the settings for IRQ and I/O address you must have "Administrator" rights.

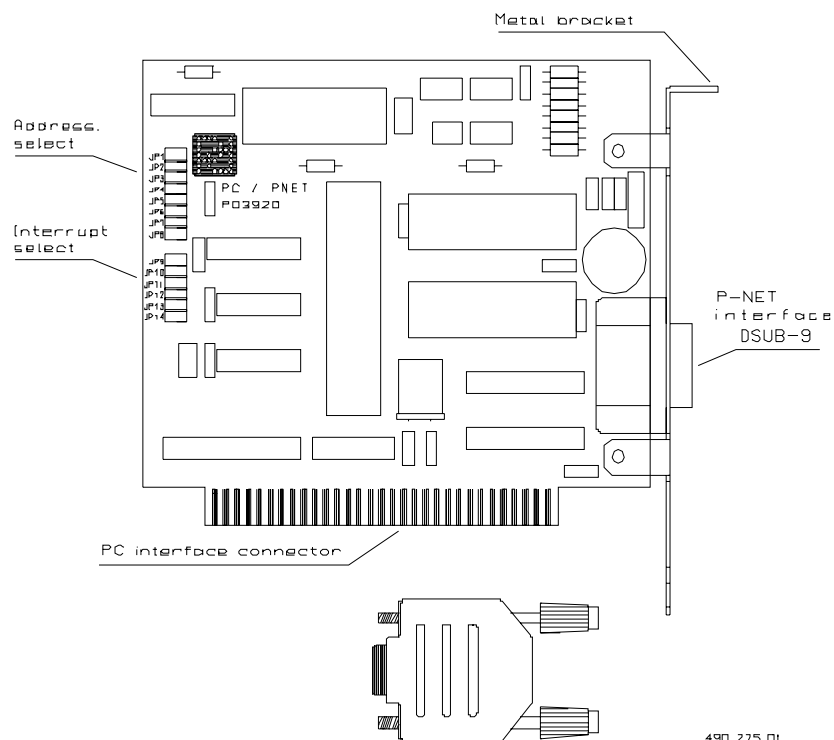


6)  
 To complete the installation of the PC P-NET card the PC must be shut down and restarted to store the new settings.



PROCES-DATA A/S, Navervej 8, 8600 Silkeborg, Denmark, phone +45-87200300, fax +45-87200301

The Configuration Options for the PD 3920 PC P-NET Card are shown below.



490 275 01

#### Base address (JP3-JP8)

Jumper	Base Address	Normally used for:
JP3	0278-0279	LPT2
JP4	02F8-02F9	COM2
JP5	0178-0179	FACTORY SETTING
JP6	01F8-01F9	HARD DISK
JP7	0378-0379	LPT1
JP8	03F8-03F9	COM1

If a Second IDE controller is used, it normally uses the base address 0178-0179 (Jumper 5).

In this case, it is recommended that address 0278-0279 (Jumper 3) is used.

#### Interrupt Selector (JP10, JP11, JP12, JP14)

Jumper Interrupt Normally used for:

JP10	3	COM2 - FACTORY SETTING
JP11	4	COM1
JP12	5	LPT2
JP14	7	LPT1

#### Description of the 9-pin male PC P-NET connector.

Pin	Connection	Colour (Cable for PD 3920)
1	P-NET A	White
3	P-NET S	Shield
5	P-NET B	Brown
2,4,6,7,8,9	NC	

NC = not connected